

Piero Lissoni with S. Sook Kim **MET+ON-OFF**



250/252

Cassina













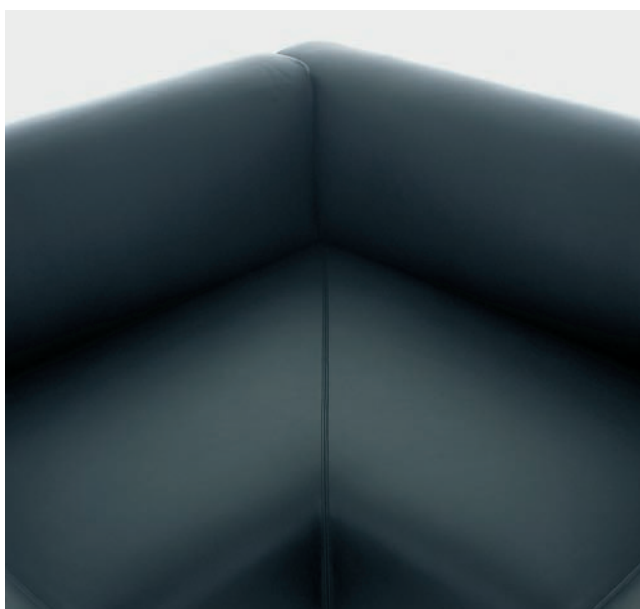


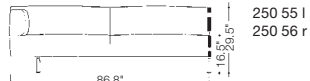
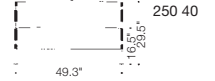
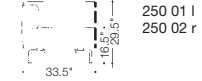
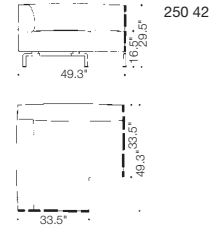
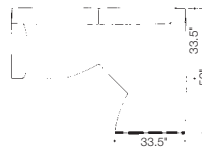
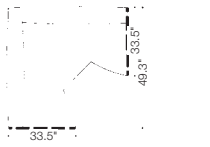
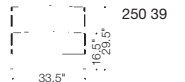
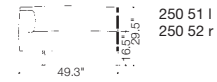
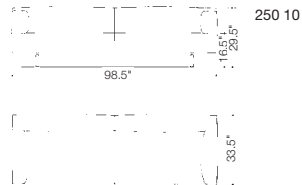
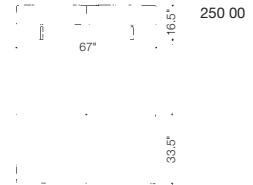
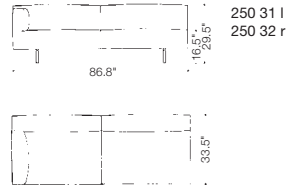
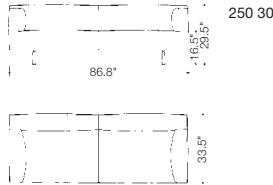
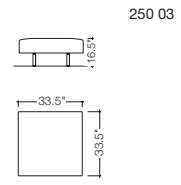
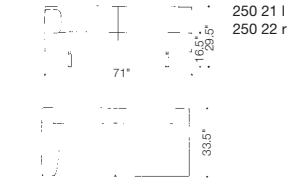
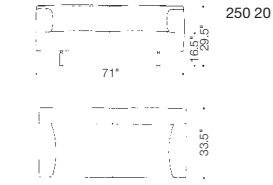
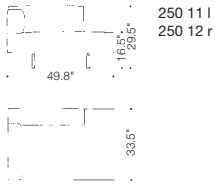




250 MET / 252 ON-OFF Piero Lissoni with S. Sook Kim

Elegant design, comfort and a wide range of practical and flexible units – these are the features of this system. Three sizes of sofas, innovative corner units, comfortable end units in different widths with incorporated footrest if required, center units, armchairs with legrest extensions, a bench, a hocker, decorative square and rectangular cushions – this is the world of Met. All covers can be removed for cleaning. Frames are made of steel and the upholstery comes in differentiated density CFC – free polyurethane foam and polyester padding. The feet are in polished or grey mat-painted aluminium. The system also includes 17.7" high round (Ø 20") occasional tables with aluminium top or lacquered tops in the colours white, or grey; mat aluminium base.





l: left
r: right

252 ON-OFF

